








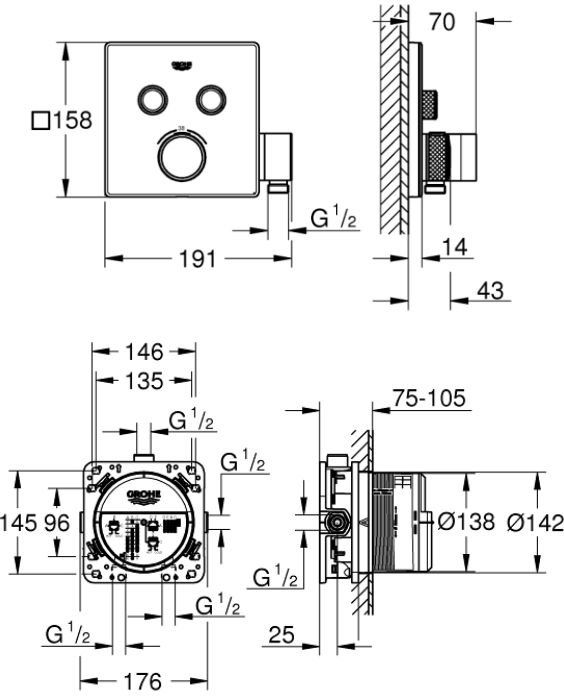
PROJECT		REF		REV	ITEM CODE	
LOCATION		DATE			PAGE	

SANITARY WARE SPECIFICATION SHEET

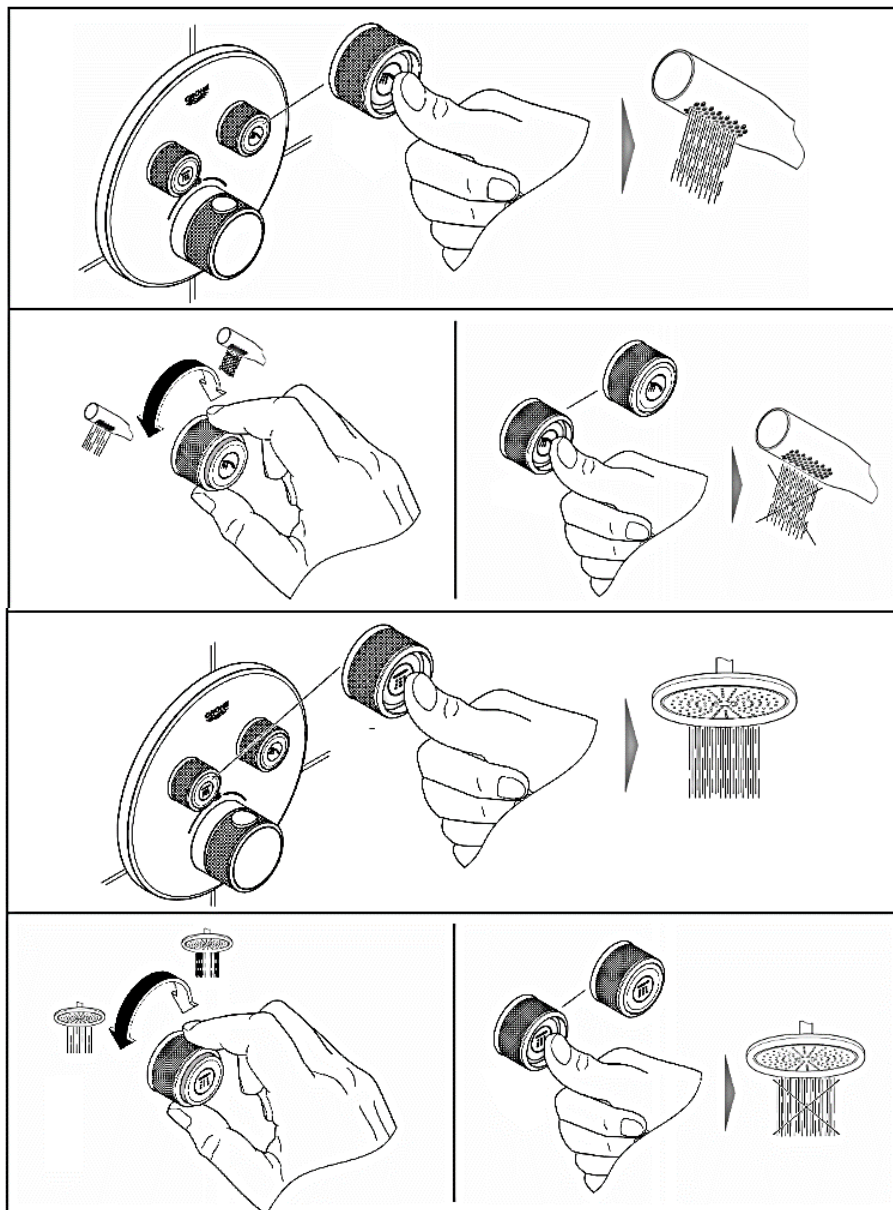
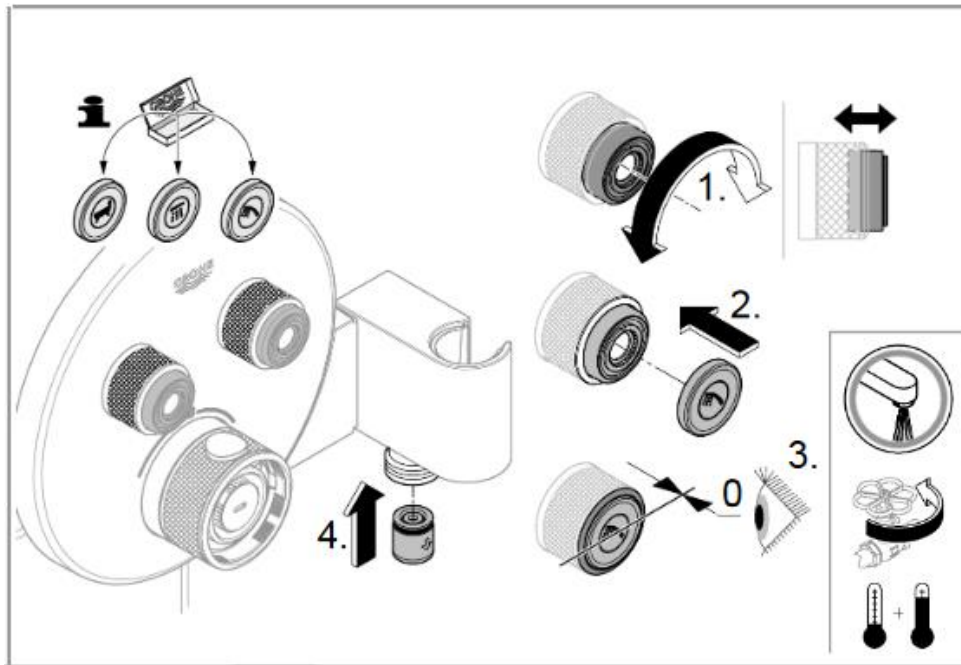
Item Descriptions	GROHE (Germany) "Grohtherm SmartControl" Chrome plated thermostat shower mixer with mixing device and adjustable temperature limiter with 2 valves and integrated shower holder	
Dimensions	L191 x W70 x W158 mm	
Model	29125000 (Thermostat mixer) 35604000 (Mounting box)	
Material	Chrome Plated	
Manufacturer	GROHE Limited	
Supplier	Acme Sanitary Ware Co. Ltd Mr. Eric Wong/ Mr. Don Yuen	
Contact Tel/Fax	(852) 2388-7171 / (852) 2710-8012	
E-mail	acme@acmesanitary.com.hk	
Website	www.acmesanitary.com.hk	

<p>"Grohtherm SmartControl" <u>Thermostat for concealed installation with 2 valves and integrated shower holder</u></p> <ul style="list-style-type: none">• set for final installation for• GROHE Rapido SmartBox 35 600 000• metal wall escutcheon with GROHE QuickFix (covered escutcheon and shaft sealing, covered fixing), retroactively 6° adjustable• GROHE StarLight chrome finish• GROHE SmartControl push for ON-OFF, turn for volume adjustment from EcoJoy to full flow• exchangeable symbols• GROHE TurboStat compact cartridge with wax thermoelement• GROHE SafeStop safety button at 38°C (calibration required)• GROHE SafeStop Plus optional temperature limiter at 43°C included• built-in non return valve and dirt strainers• multiple outlets can be run simultaneously• integrated shower union with shower outlet 1/2"• without roughing-in-set• flow performance: outlet B = 24 l/min hand shower = 12 l/min outlet B + hand shower = 27 l/min	<p>"GROHE Rapido SmartBox" <u>Universal rough-in box, 1/2"</u></p> <ul style="list-style-type: none">• 3 outlets 1/2"• 2 inlets below, 1/2"• installation depth 75-105 mm• connection unit in DR brass• pre-mounted flushing plug• stable build-in box and protective cover• fixing options for solid walls and dry cladding• gasket• without set for final installation• professional edition
---	---



<p style="text-align: center;">Illustration/ Drawing</p> <div><div>  </div></div> <div></div>







香港上環道七號入境事務大樓 48 樓
48/F, Immigration Tower, 7 Gloucester Road, Wan Chai, Hong Kong

本署檔號 : (2) in WSD 3321/2021 T/J(1301/2021)
Our ref.
來函檔號 :
Your ref.

電話 :
Tel.
傳真 : 2824 0578
Fax.

12 October 2021



Approval of "GROHE" Thermostatic Mixer (General Acceptance No. C20211111)

Your letter ref. WRC/2617 dated 25 August 2021 refers.

Having considered the test report ref. J26895 issued on 23 August 2021 by Nutek Systems (HK) Ltd., this Authority accepts that the fitting described below complies with, and its use when correctly installed does not contravene, the Waterworks Ordinance and Regulations.

Name of Manufacturer: Grohe AG
Country of Origin: Germany
Brand: Grohe
Details of Fitting: 1/2" Thermostatic shower mixer
Model: 35604000 + 29125XXX
(where "XXX" denote the code of colour)
Body Markings: 
Expiry Date: 17 August 2026

This Authority hereby permits the use of the above fitting in fresh water plumbing systems subject to full adherence to Waterworks installation requirements. In particular, you are required to draw your customers' attention to the following requirement-

"The cold water supply to the fitting shall be drawn from the same source that supplies the hot water apparatus so as to provide a balanced pressure and to obviate the risk of scalding in the event of a restriction or failure in the water supply." AND

"The shower head or handspray should not be placed in submerged conditions and should be securely fixed to the original position after use."

A condition of this acceptance is that the fitting to be installed shall be replicas of the sample as certified by the testing agent mentioned above and without modifications. This acceptance may be withdrawn at any time if the standard of the fitting installed fails to meet that of the approved sample or if the fitting is found to be unsuitable for use in fresh water plumbing systems.

This acceptance is only applicable to the main body of the fitting, unless otherwise specified.

For the use of the fitting in any project, the General Acceptance Number of this letter must be quoted as a means of identification of acceptance of the fitting by this Authority.

Should you have any enquiries, please contact our Engineer Ms Winnie LO at tel. no. 3583 4086.

Yours faithfully,



(Roger WONG)
for Director of Water Supplies

Encl.

c.c. WSD 3321/1/82] - without catalogue
 ME/MC] - with soft copy only